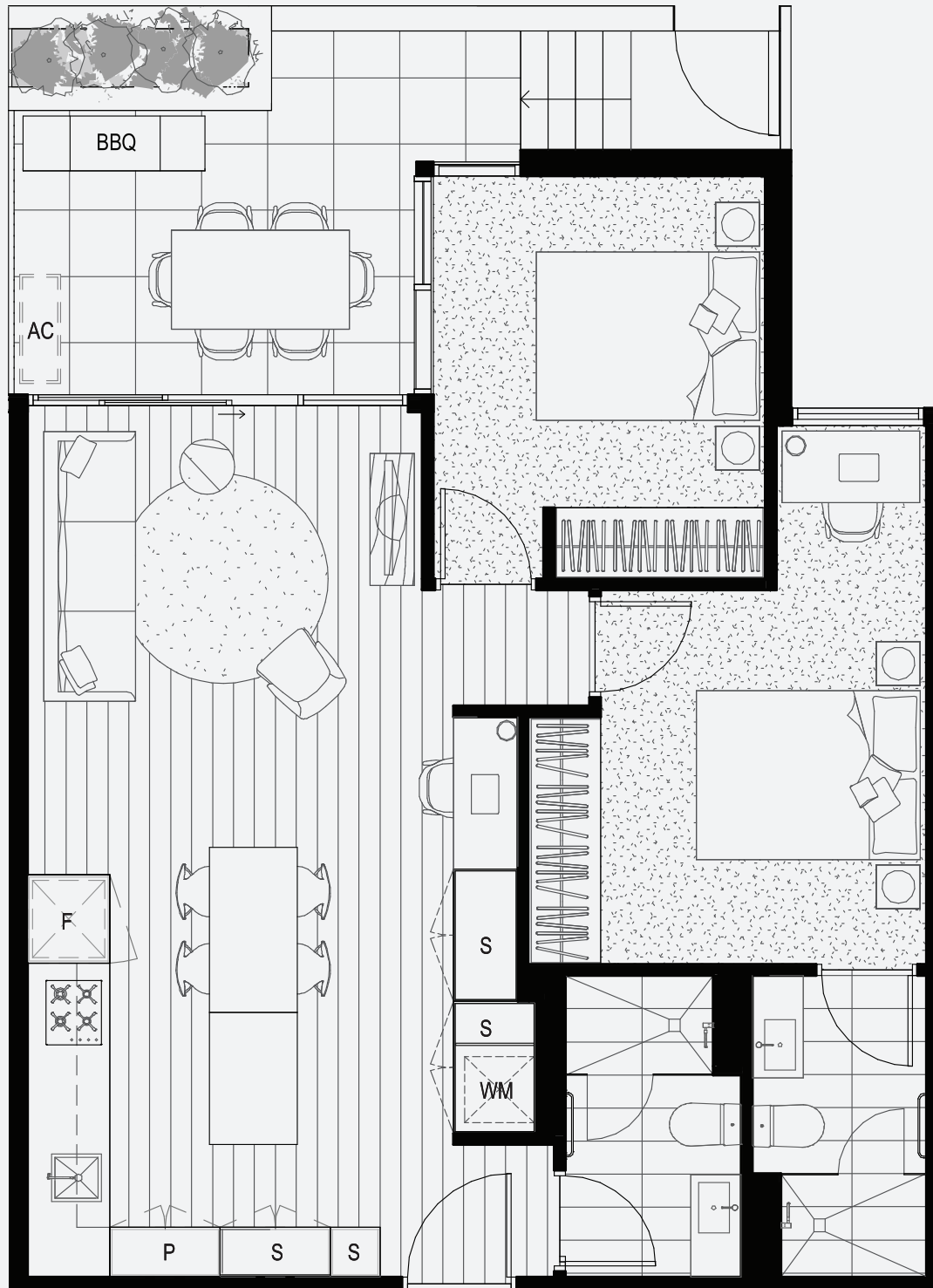


APARTMENT

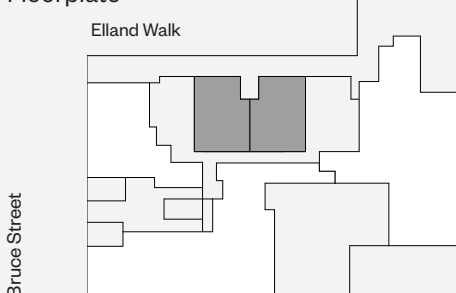
GB. GC (M).

hayball MAB



Note: Island Bench is standard. Moveable Dining Table Extension is an option.

Floorplate



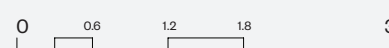
Apartment

Type
2 BED. 2 BATH.

Space

| | |
|---------------|--------------------|
| INTERNAL..... | 76.0m ² |
| EXTERNAL..... | 17.5m ² |
| TOTAL..... | 93.5m ² |

Scale Rule



KEY: P: PANTRY. F: FRIDGE. S: STORAGE. (M): MIRRORED.
WM: WASH MACHINE. SB: SHOWER BATH. AC: AIR CONDITIONER.

THE INFORMATION IN THIS PLAN HAS BEEN PREPARED BY MAB CORPORATION PTY. LTD. SOLELY FOR PROMOTIONAL PURPOSES. THE INFORMATION CONTAINED HEREIN HAS BEEN PREPARED IN GOOD FAITH WITH DUE CARE. ANY PROJECTIONS HOWEVER, REPRESENT ESTIMATES ONLY AND MAY BE BASED ON ASSUMPTIONS WHICH, WHILE REASONABLE, MAY NOT BE CORRECT. WE DO NOT WARRANT THE ACCURACY OF ANY INFORMATION CONTAINED IN THIS PLAN AND DO NOT ACCEPT ANY LIABILITY FOR ANY ERROR OR DISCREPANCY OR NEGLIGENCE OR OTHERWISE IN THE INFORMATION. THE INFORMATION CONTAINED HEREIN DOES NOT CONSTITUTE ALL, OR ANY PART OF AN OFFER OR REPRESENTATIONS FOR ANY PROPERTY REFERRED TO HEREIN. ALL PLANS, SUBDIVISION, SURVEYS, DEVELOPMENT PLANS, ARTIST'S IMPRESSIONS, PHOTOGRAPHIC MATERIAL AND OTHER SUCH MATERIAL ARE REPRESENTATIVE ONLY. ALL PARTIES MUST MAKE THEIR OWN ENQUIRIES AND OBTAIN INDEPENDENT ADVICE IN ORDER TO VERIFY ANY OR ALL INFORMATION. ALL ENCLOSURES IN THIS PLAN ARE OWNED BY MAB CORPORATION PTY. LTD. AND ITS CONSULTANTS. THIS DOCUMENT REMAINS THE PROPERTY OF MAB CORPORATION AND SHOULD NOT BE COPIED OR DISTRIBUTED WITHOUT PRIOR APPROVAL. © COPYRIGHT MAB CORPORATION JANUARY 2020.

